



5th Asia Pacific Congenital and Structural Heart Intervention Symposium 2014

10 - 12 October 2014
Hong Kong Convention & Exhibition Centre

HONG KONG

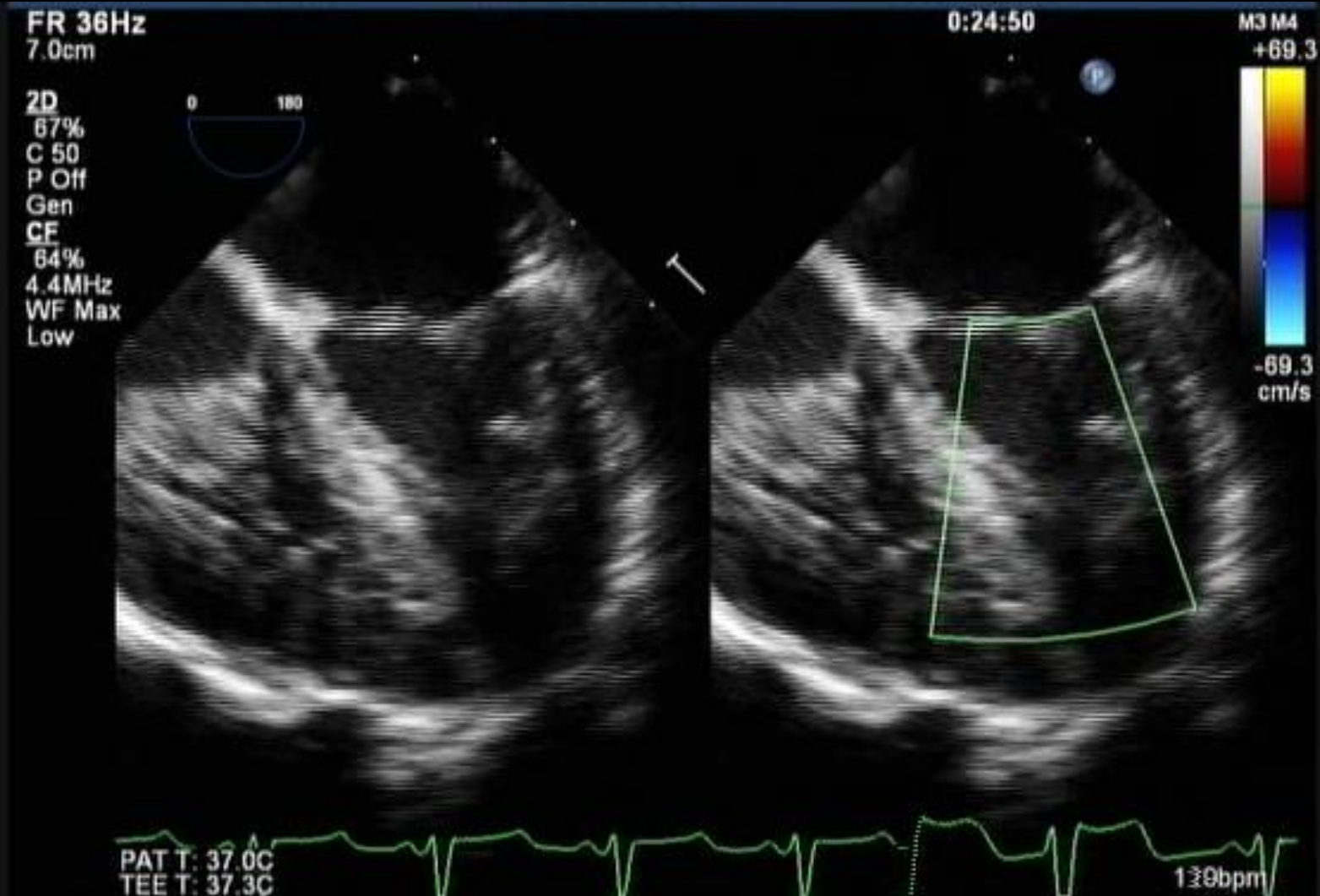
Hybrid Muscular VSD Closure Using Lifetech Cera Membranous VSD (Asymmetric) Occluder

Dexter D. Cheng
Philippines

History

- 13 months old female
- 6 kg
- Diagnosed to have a large VSD extending from the inlet to the outlet septum (8mm) with multiple muscular apical VSDs and Patent ductus Arteriosus (4mm)
- S/P Pulmonary artery banding with PDA (transection) at 8 weeks of life

Intra-Operative TEE



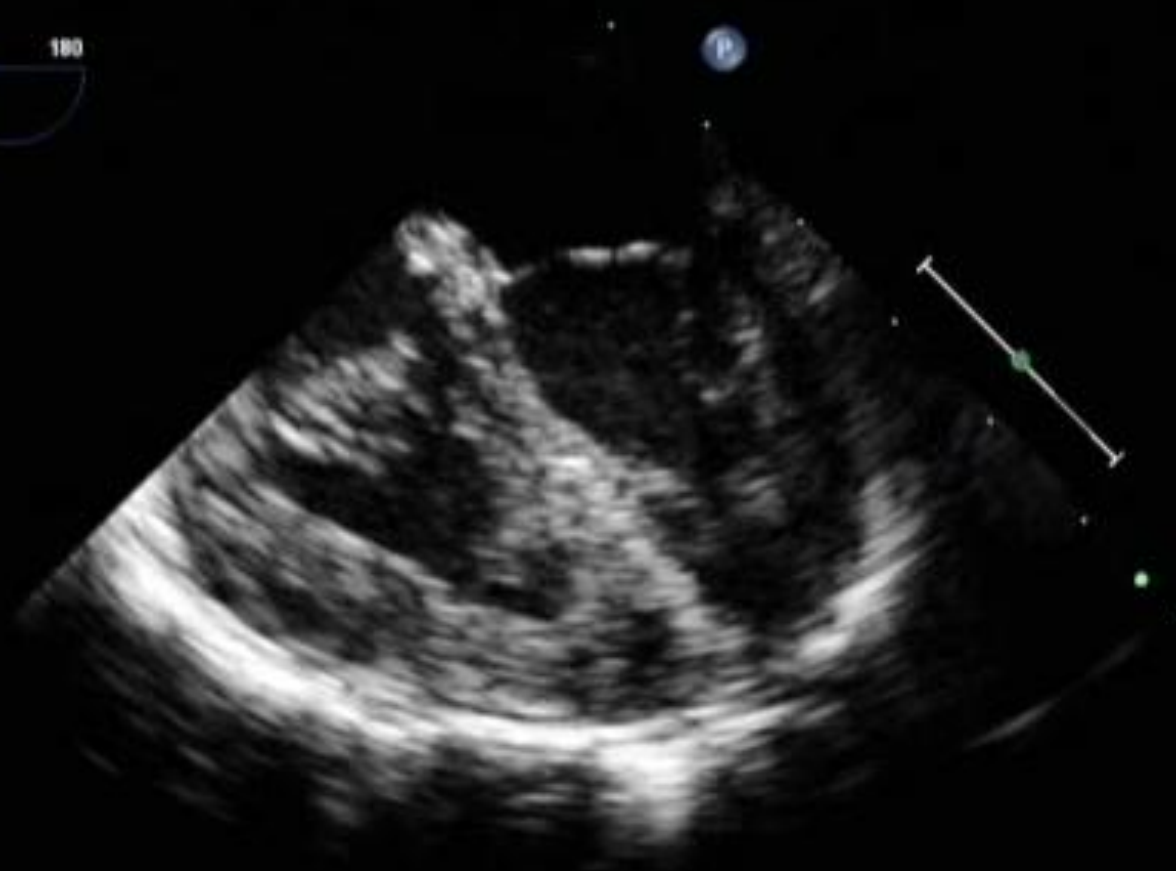
Pushing on the RV free Wall

FR 87HZ
7.0cm

U:20:41

M3

2D
83%
C 50
P Off
Gen



PAT T: 37.0C
TCT T: 33.3C

106hcm

Access Across VSD



Access RV Free Wall More Superiorly

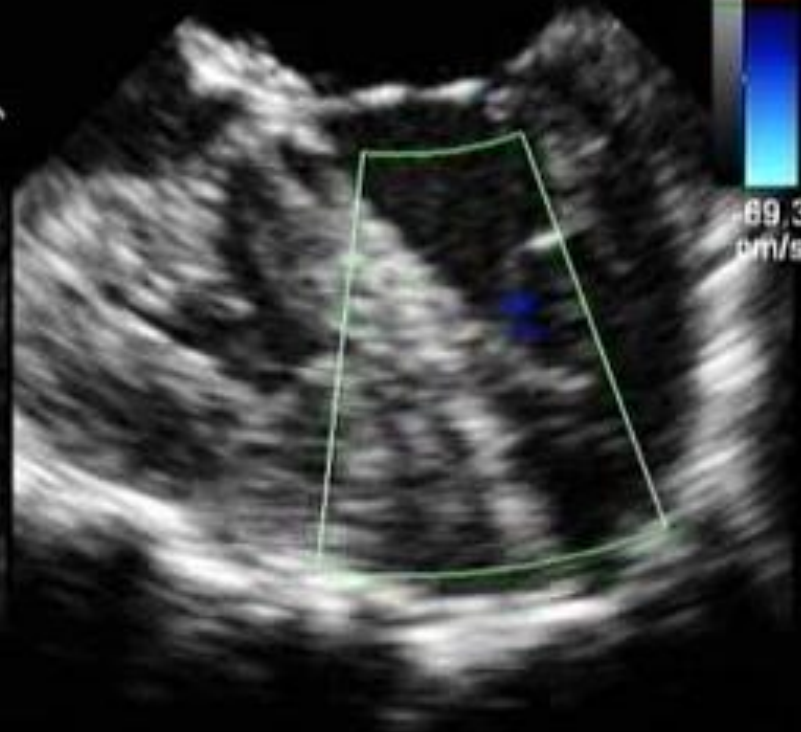
FR 36HZ
7.0cm

2D
88%
C 50
P Off
Gen
CF
64%
4.4MHz
WF Max
Low



U:33:57

M3 M4
+69.3



PAT T: 37.0C

100%

Glidewire Crossing VSD

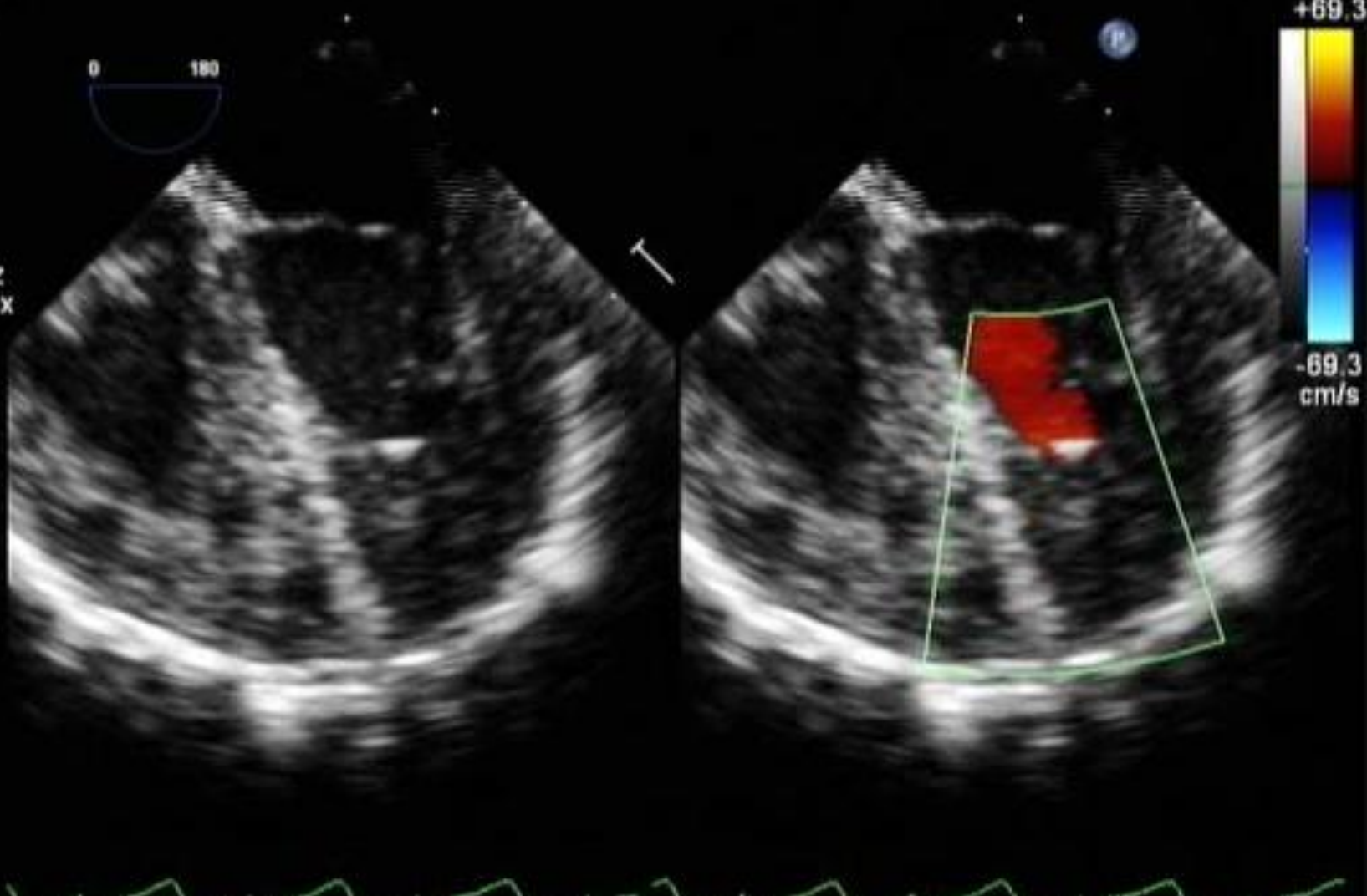
FR 36HZ
7.0cm

2D
88%
C 50
P Off
Gen
CF
84%
4.4MHz
WF Max
Low



0:34:37

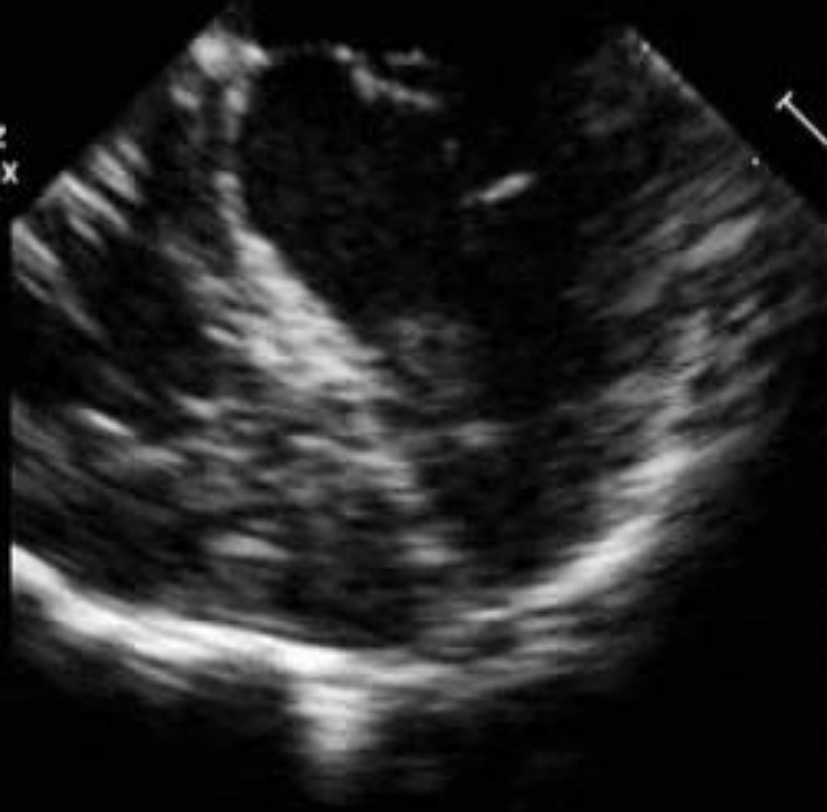
M3 M4
+69.3



Bubble Contrast Thru Sheath

7.0cm

2D
66%
C 50
P Off
Gen
CF
64%
4.4MHz
WF Max
Low

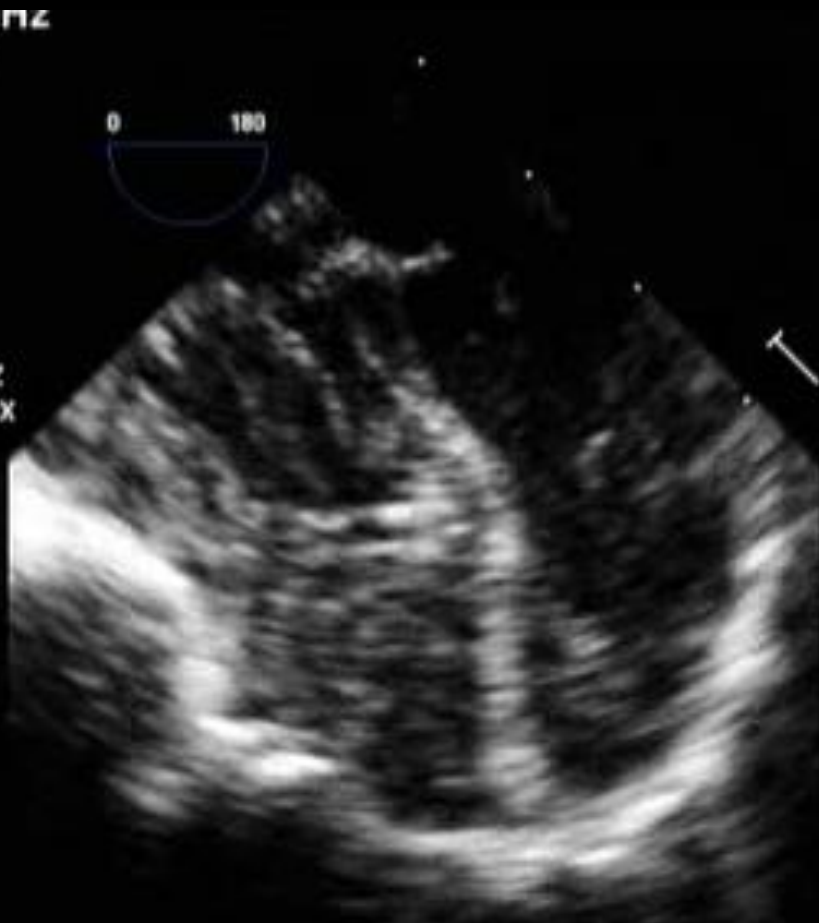


+69.3
-69.3
cm/s

Cera VSD Device Deployment

PR 30Hz
7.0cm

2D
66%
C 50
P Off
Gen
CF
64%
4.4MHz
WF Max
Low



0.00:24

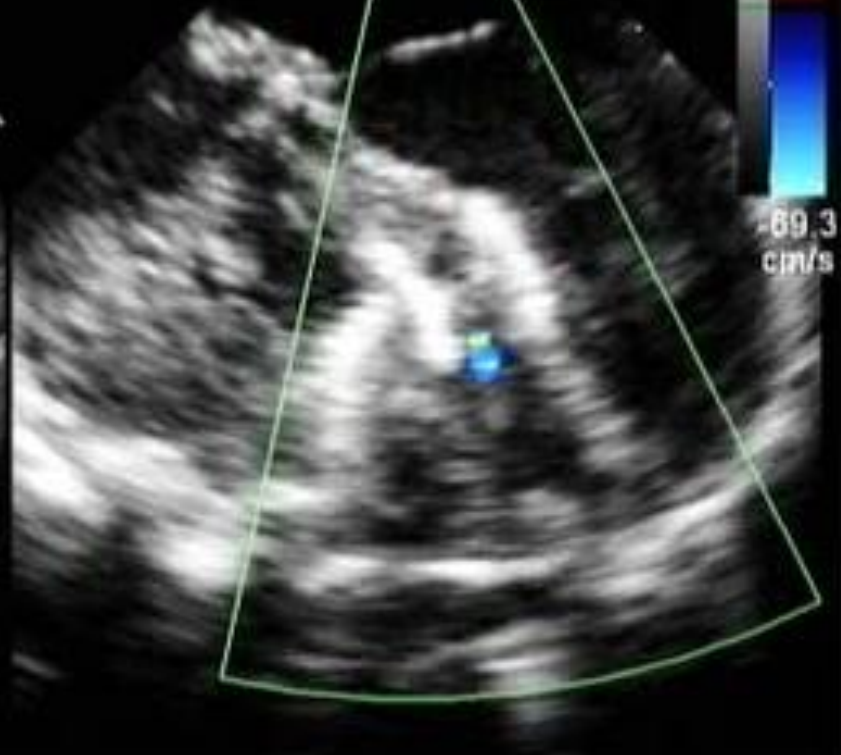
max min
+69.3



VSD Detached

FR 4716
7.0cm

2D
66%
C 50
P Off
Gen
CF
64%
4.4MHz
WF Max
Low



69.3
+69.3
-69.3
cm/s



Cera Membranous VSD Occluder



Cera™ Membranous VSD Occluder (Symmetric with Larger Left Disc)

Lessons

1. Access directly across the VSD was difficult. Was easier to come from above and push on the RV free wall across the VSD to make it open up and at the same time pinch the moderator band.



Lessons

2. Sheath was pulled out of the RV wall, leaving delivery cable only. Cable shaft is not covered which lead to RV muscle tissue being entrapped in the grooves of the delivery cable.
 - Don't pull the sheath out to protect the cable
 - Maybe lifetech can place a plastic wrap along the cable shaft near the screw



5th Asia Pacific Congenital and Structural Heart Intervention Symposium 2014

10 - 12 October 2014
Hong Kong Convention & Exhibition Centre

HONG KONG

[CONTACT US](#)

Thank You